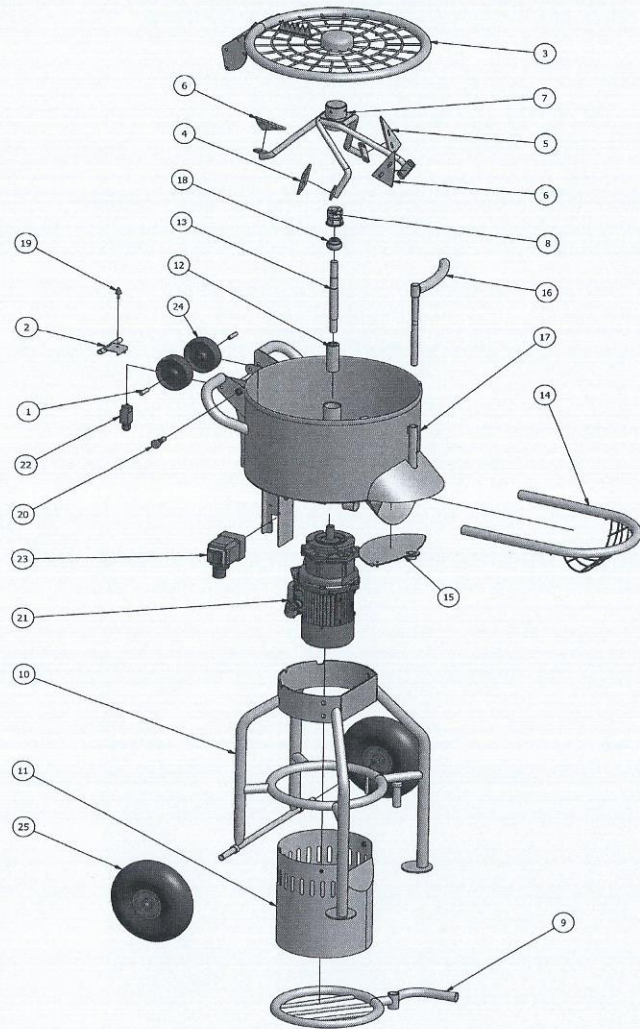


# M80 reservedele / spare parts



POS.	PART NUMBER	BESKRIVELSE	DESCRIPTION
1	M110.060.050	Bøsning for transporthjul	Bushing for transportwheel
2	M110.060.000	Plade for lågkontakt	Plate for cover switch
3	M080.525.000	Låg M080	Cover M080
4-6.	M080.475.000	Metalskovle sæt m. 4 stk	Metalshovel set w. 4 pcs.
7	M080.145.000	Blanderarm M080	Mixer head M080
8	M080.426.000	Hoved for drivaksel 24mm	Drive head 24mm
9	M080.375.000	Spandehylde	Bucket support
10	M080.350.000	Understel	Frame
11	M080.325.000	Motorskærm	Engine cover
12	M080.300.000	Bøsning for drivaksel	Bushing for driveshaft
13	M080.275.000	Drivaksel	Driveshaft M080
14	M080.150.000	Udløbsbeskyttelse	Outlet protection
15	M080.125.000	Udløbsplade	Trapdoor
16	M080.100.000	Udløbshåndtag	Trapdoor handle
17	M080.050.001	Blanderkar M080	Container
18	B.000.070.110	Kugleleje	Bearing
19	B.000.070.010	Gummidæmper	Rubber damper
20	B.000.060.010	Positionsbolt	Positioning bolt
21	B.000.045.100	Motor og gear	Motor and gear
22	B.000.030.010	Mekanisk lågkontakt	Mechanical cover switch
23	B.000.020.010	Hovedafbryder	Main switch
24	B.000.010.020	Transporthjul	Transportwheel
25	B.000.010.010	Luftgummihjul	Rubberwheel

## ØVRIGE RESERVEDELE

Motor/gear 1,1KW 110V  
 Støvlåg  
 Gummiskovlblade 1 sæt  
 Maskinovertræk  
 Forlænger kabel m/ CE-stik

## OTHER SPARE PARTS

Motor/gear 1,1KW 110V  
 Dustlid  
 Rubbershovels 1 sæt  
 Machine protection/cover  
 Extension cable w. CE-plug